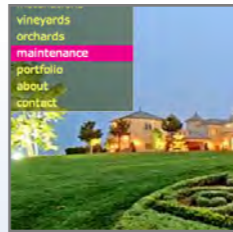


Your Story. My Talent. Your Business Presence.



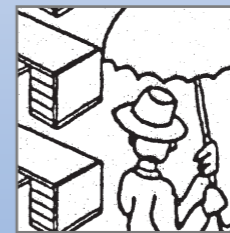
identity branding



*web design
and development*



*interface design
and presentations*



*print design
and illustration*

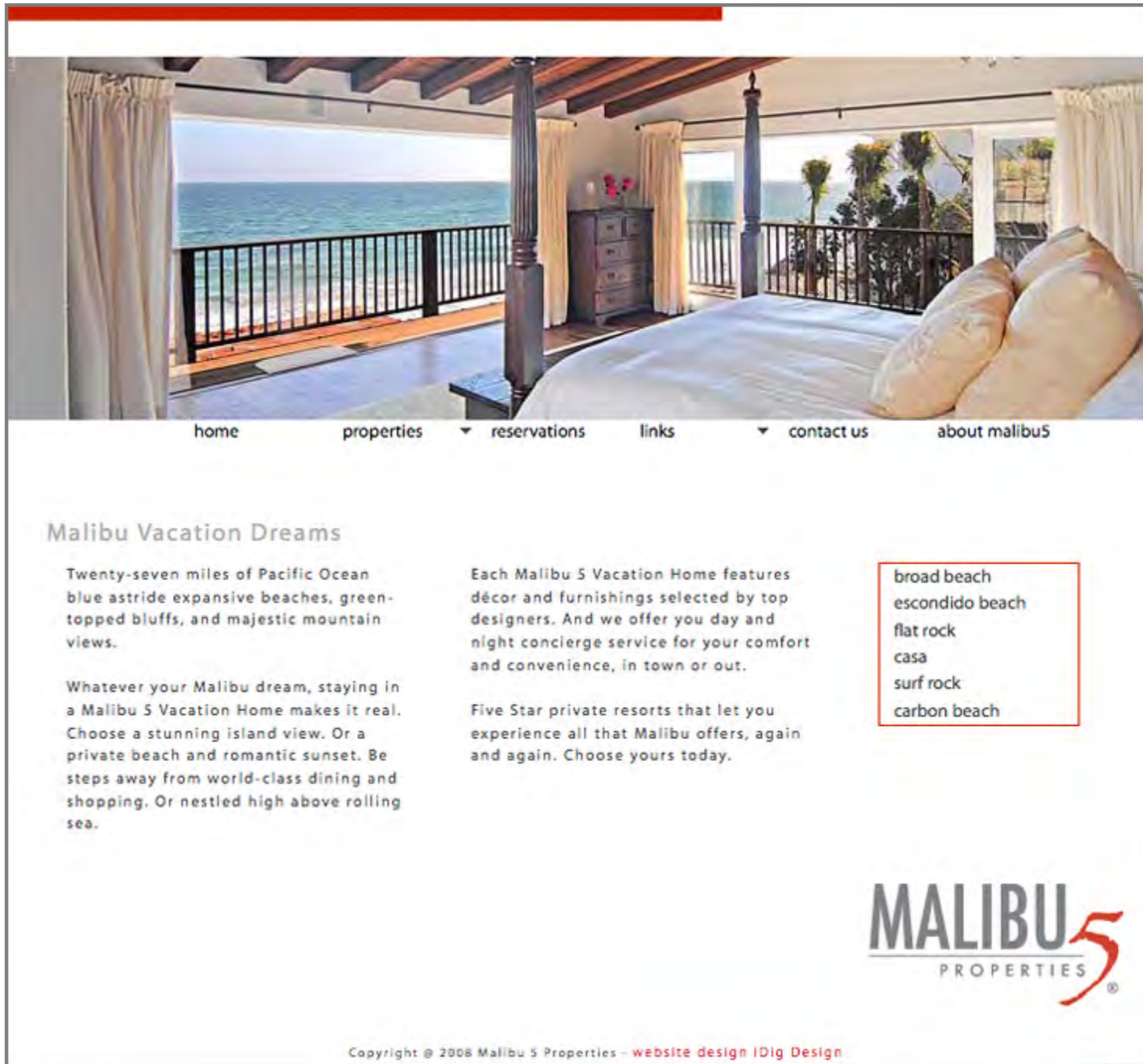




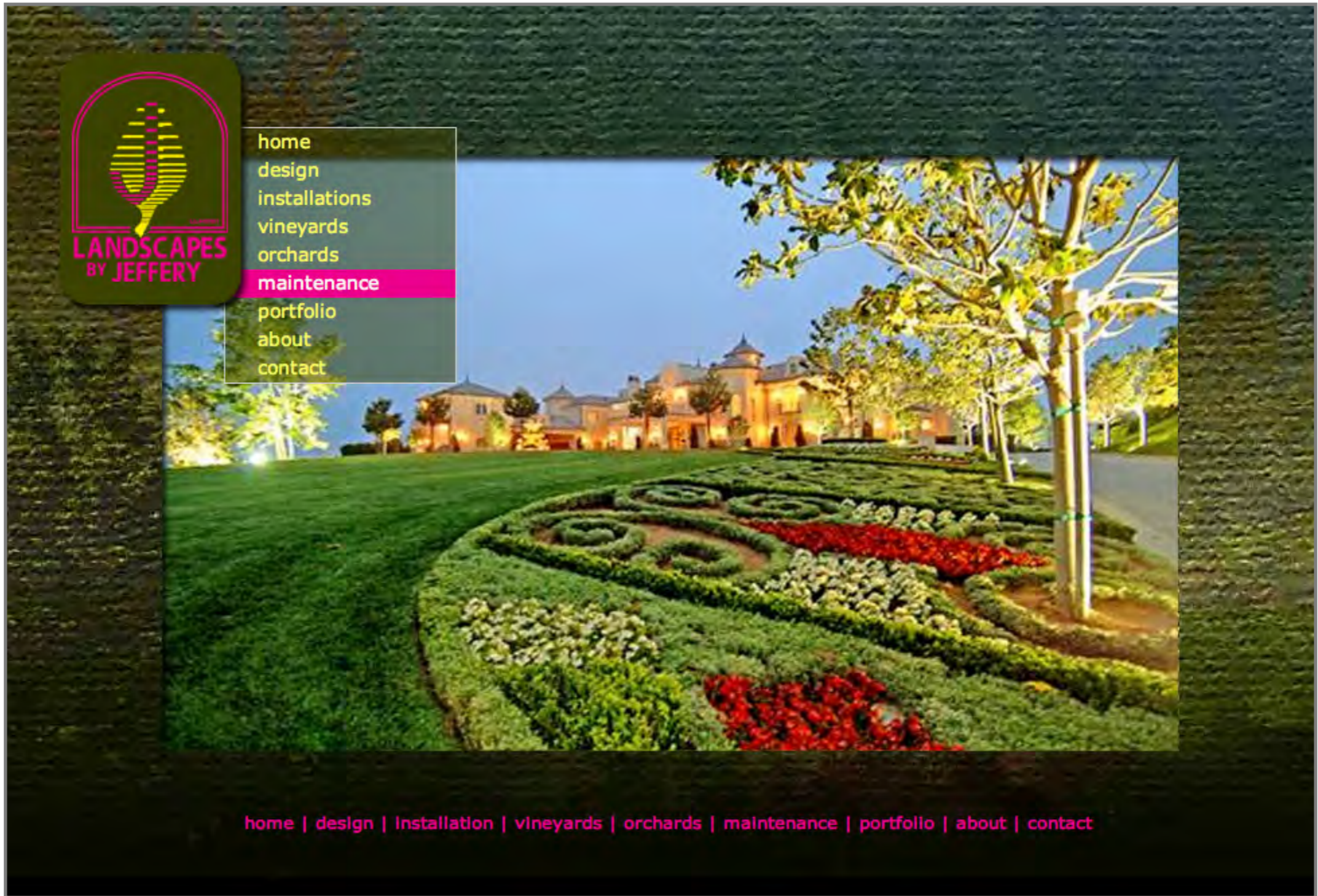
business card and stationery note

envelope





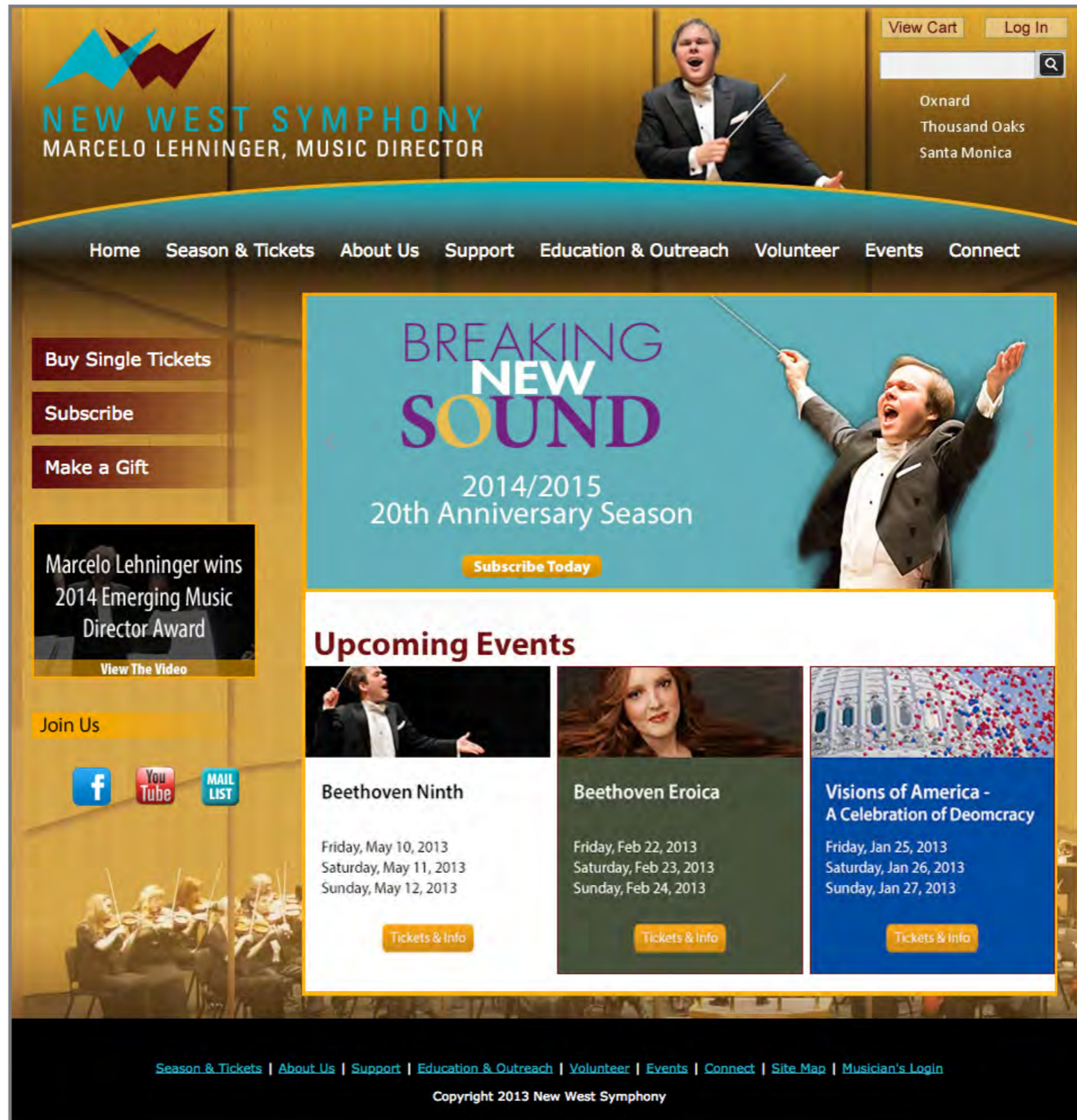
www.malibu5.com



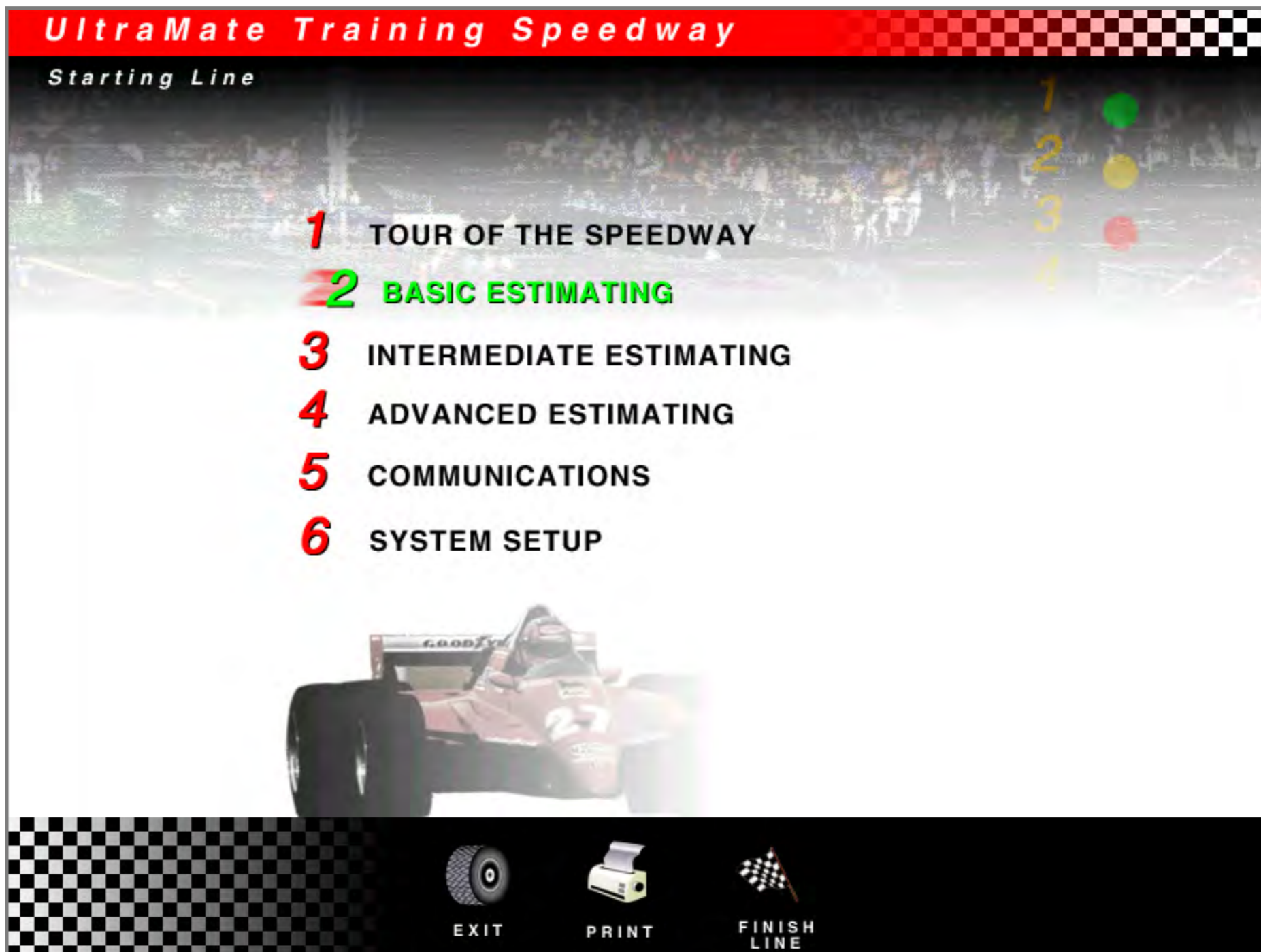
www.landscapesbyjefferyinc.com

The screenshot shows the homepage of the Key Code Media website. At the top left is the logo for 'key code media' with a stylized orange and blue graphic. To the right is a search bar with the text 'search...'. Below the logo is a horizontal navigation menu with buttons for 'Home', 'Solutions', 'Products', 'Services', and 'Contact Us'. The main content area features a large image of digital media equipment, including a monitor, a server tower, and a 'Final Cut Server' box, with the text 'Digital Media Communication Systems' to the right. Below this is a 'Home' breadcrumb and a large heading 'Welcome to Key Code Media'. The main text describes the company's services and history, mentioning its founding in 2001 and its focus on digital media communication systems. On the left side, there are two blue boxes: 'Coming Events' with 'No events' and a 'View Full Calendar' link, and 'KCM Twitter' with a link to a tweet about a 'First Annual Meet & Greet in San Francisco with Avld at'. On the right side, there is a 'Shop Key Code Media' section with links for 'Public Store', 'Private Store', and 'Order Tracking', each with a small icon. Below that is a 'Special Offers' section with a placeholder image of a blue and yellow logo. The website URL 'www.keycodemedia.com' is displayed at the bottom right.

www.keycodemedia.com



www.newwestsymphony.com



Zero Tolerance

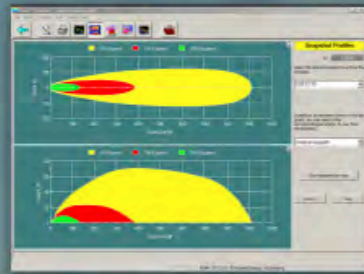
This zero tolerance policy applies to all forms of discrimination prohibited by law, including harassment on the basis of a person's sex, age, race, nationality or disability.

In order for the company to ensure that unlawful discrimination does not occur, all employees are required to treat one another with respect. Behavior that does not rise to the level of unlawful activity, but that a reasonable person would find offensive and inappropriate for the workplace, is a violation of the respect rule. Therefore, use common sense in your interactions with coworkers, managers and persons outside the organization.



- ☰ OUTLINE VIEW
- ☕ TAKE A BREAK
- 🔊 VOLUME
- ❓ HELP
- ◀ BACK
- ▶ NEXT

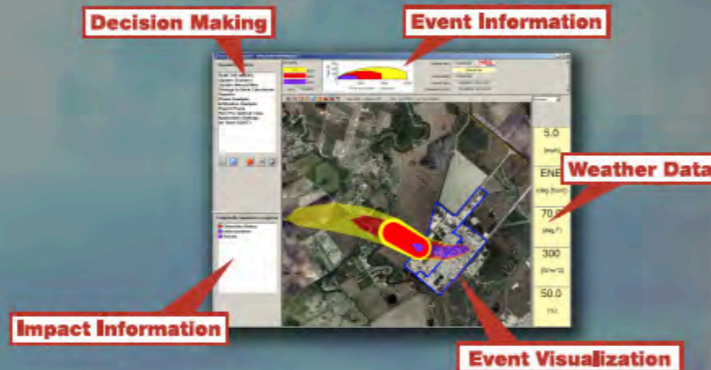
Integrated Solutions for Chemical Risk Analysis and Emergency Management



Toxic, Fire, Explosion & Particulate Modeling



Rapid, Continuous Threat Visualization & Assessment



SAFER Real-Time®

Consequence Assessment for Emergency Management at Chemical Plants and Refineries

SAFER STAR®

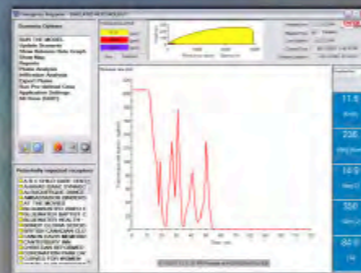
"Anywhere" Emergency Management for Response Teams and Homeland Security

SAFER TRACE™

The Engineer's Choice for Consequence Analysis and Chemical Risk Management



Real-Time Met & Sensor Data Analysis



Patented Release Rate Estimation



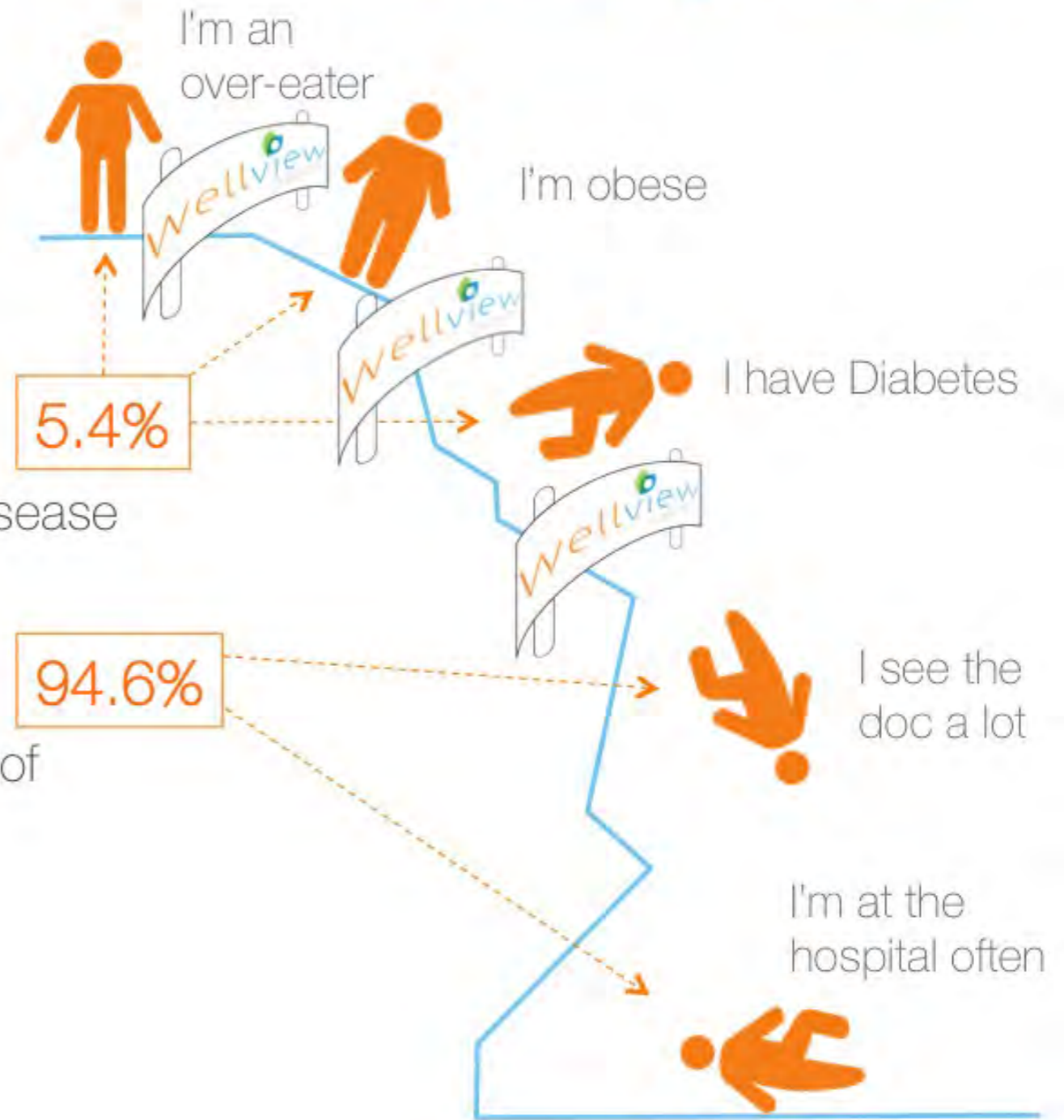
Helping Visualize Action

Copyright 2007 SAFER SYSTEMS

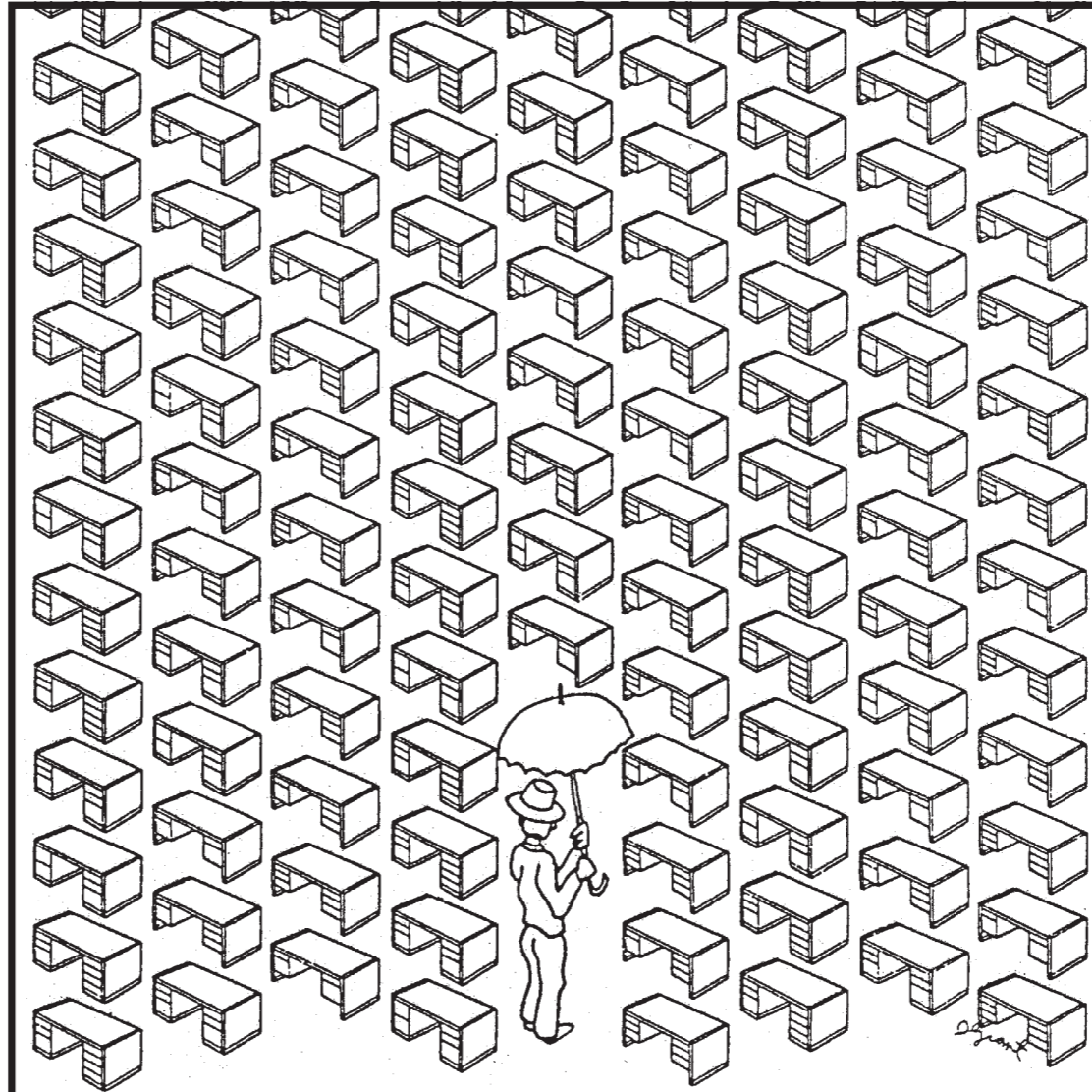
Building Rails

GBA | INSURANCE TRUST

- Where is your opportunity
 - Prevention of complex disease
 - Low cost treatment
- Where you spend currently
 - Diagnosis and treatment of complex disease
 - High cost treatment







The Annex

HIEBERT, INC.

Grand Opening
Friday, December 3

Discount Office Furniture

8747 Beverly Blvd. West L.A. (213) 652-6545

Whimsical illustration and conceptual design captured attention in this newspaper ad for Hiebert Inc., a division of Hon Industries.



**PRACTICE GOOD
HYGIENE!**



**CONTROL
TEMPERATURES!**



**PREVENT CROSS
CONTAMINATION**



**STORE CHEMICALS
AWAY FROM FOODS**

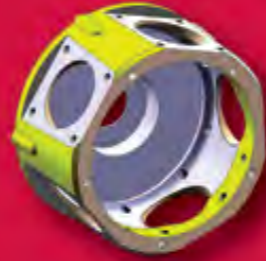


**STORE AT LOW
TEMPERATURES**



**WEAR HAIR
RESTRAINTS!**

Exploit the Power



Mill-Turn Multitasking CAM Software

ESPRIT CAM software will unlock the profitability from your mill-turn machines with a solution certified to overcome the programming challenges and complexities inherent to these machines. The right CAM system is the key to mill-turn success. ESPRIT is the right choice to release the ultimate productivity of your machine investment.

ESPRIT delivers powerful full-spectrum programming for 2-5 axis milling, 2-22 axis turning, 2-5 axis wire EDM, multitasking mill-turn machining, and B-axis machine tools.



The Right Choice

For more information about the benefits of CNC programming with ESPRIT:
dptechnology.com
800•627•8479

a is for alfi



www.alfi.com



**Cookware & Knives
for the Holidays**

alfi.com

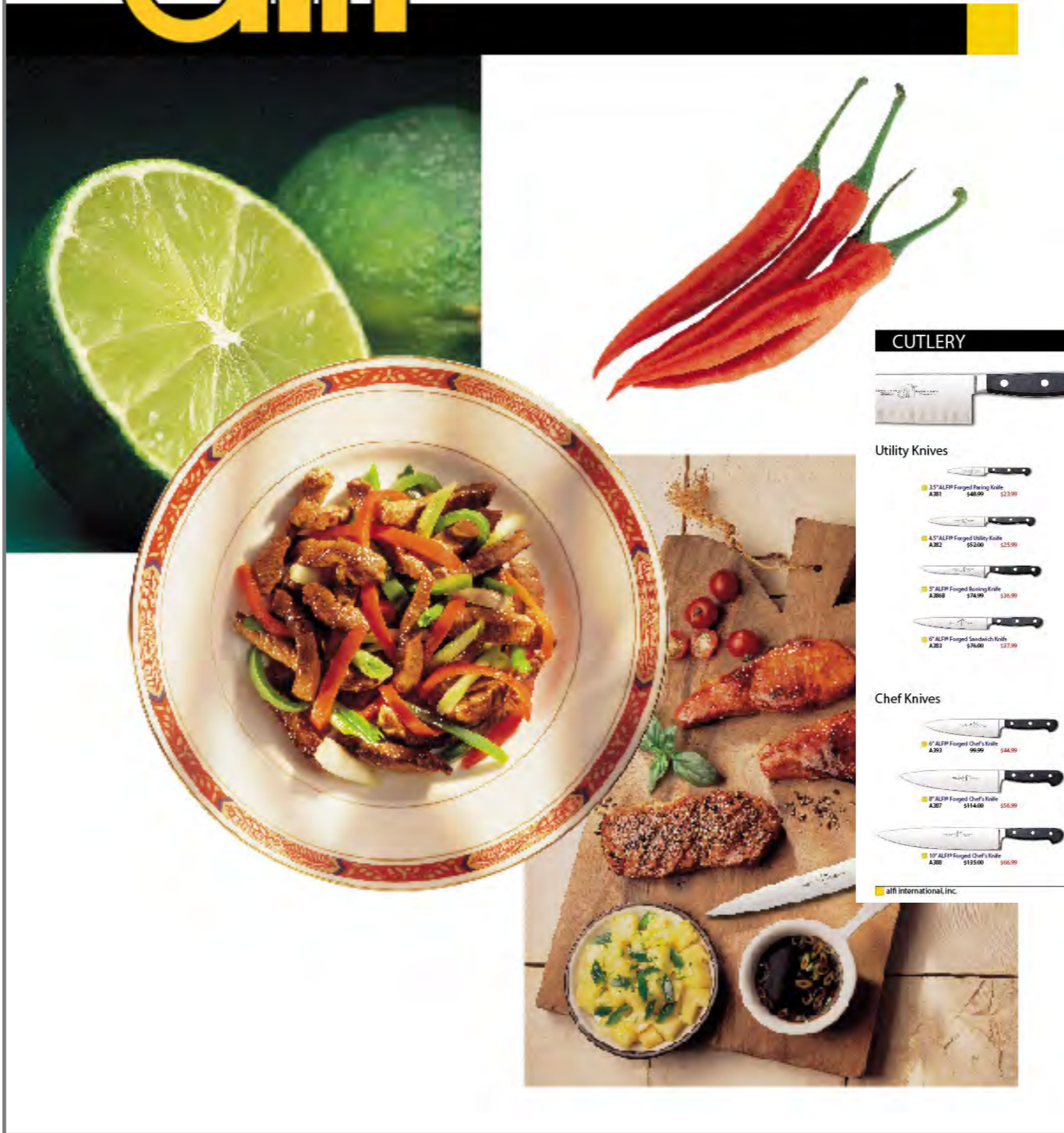
ALFI INTERNATIONAL, INC.
1 (800) 288-2534

in business since 1986

Member of Better Business Bureau



alfi®



CUTLERY **alfi** Alfi Forged

All Forged Knives are made in Solingen, Germany from the very finest German High-Carbon Molybdenum Stainless Steel (52% Cr MoV15). They have been hot drop forged by hand and ice tempered to a Rockwell hardness of 56 degrees. They are polished and sharpened to the highest professional standard in the industry. These beautiful knives are being offered at half price for a limited time.

- Utility Knives**
 - 3.5" ALFP Forged Paring Knife A381 \$48.00 \$23.99
 - 4.5" ALFP Forged Utility Knife A382 \$52.00 \$25.99
 - 5" ALFP Forged Boning Knife A388 \$74.99 \$35.99
 - 6" ALFP Forged Sandwich Knife A383 \$76.00 \$37.99
- Bread Knives**
 - 8.5" ALFP Forged Bread Knife A419 \$52.00 \$25.99
 - 9" ALFP Bread Knife Curved A418 \$100.00 \$49.99
- Santuko Knives**
 - 7" ALFP Forged Santuko Knife A405 \$94.00 \$46.99
 - 7" ALFP Forged Gantoon Santuko Knife A406 \$100.00 \$49.99
- Chef Knives**
 - 6" ALFP Forged Chef's Knife A302 \$60.00 \$44.99
 - 8" ALFP Forged Chef's Knife A307 \$114.00 \$56.99
 - 10" ALFP Forged Chef's Knife A306 \$135.00 \$66.99
- Carving & Slicing Knives**
 - 8" ALFP Forged Carving Knife A304 \$99.00 \$44.99
 - 8" ALFP Forged Gantoon Carving Knife A305 \$105.00 \$51.99
 - 10" ALFP Forged Slice A305 \$108.00 \$53.99
 - 10" ALFP Forged Gantoon Slice A306 \$120.00 \$61.99

alfi international, inc.

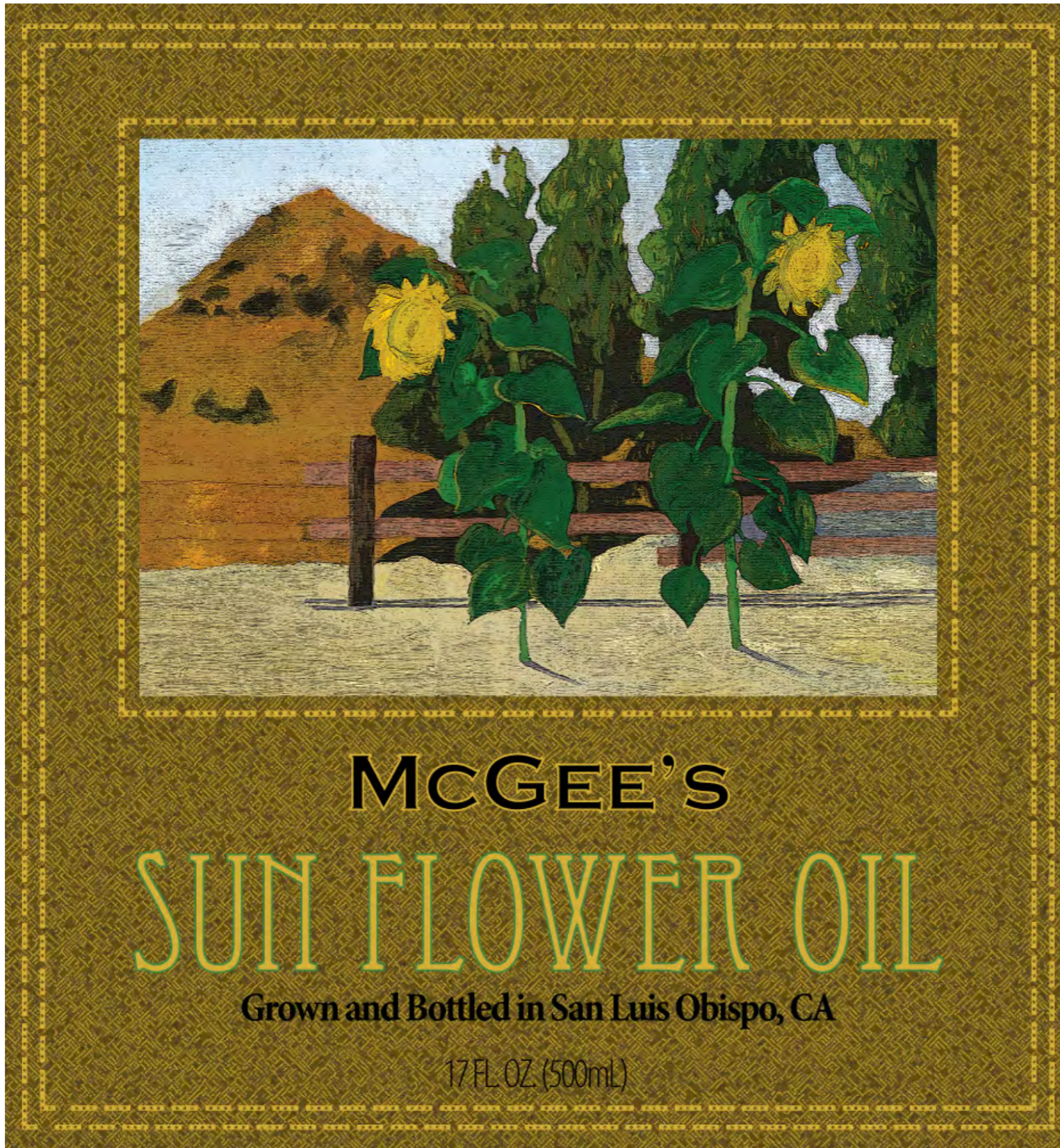
Alfi Forged Sets

- 4 Piece Steak Set A30054 \$252.00 \$125.99
- 5 Piece Set A30051 \$268.00 \$132.99
Set Includes:
10" Slice
8" Chef's Knife
6" Sandwich Knife
3.5" Paring Knife
10" Sharpening Steel
- 2 Piece Set A30052 \$205.00 \$99.99
Set Includes:
8" Carve
6.5" West Fork
- 6" ALFP Sharpening Steel A309 \$29.99
- 6" ALFP Forged Cleaver A301 \$120.00 \$61.99

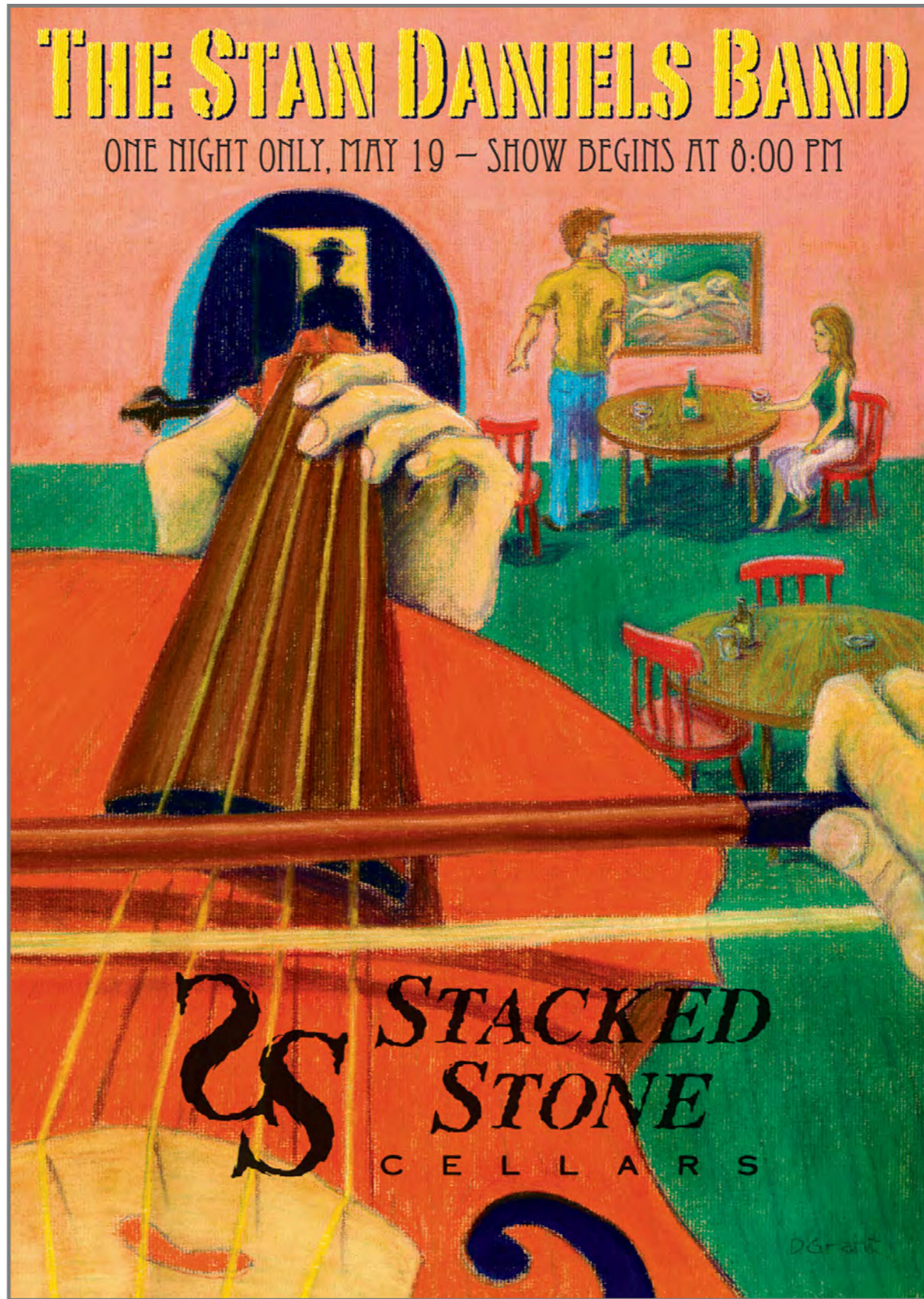
To order call toll free (800) 288-2534 or visit us on line www.alfi.com



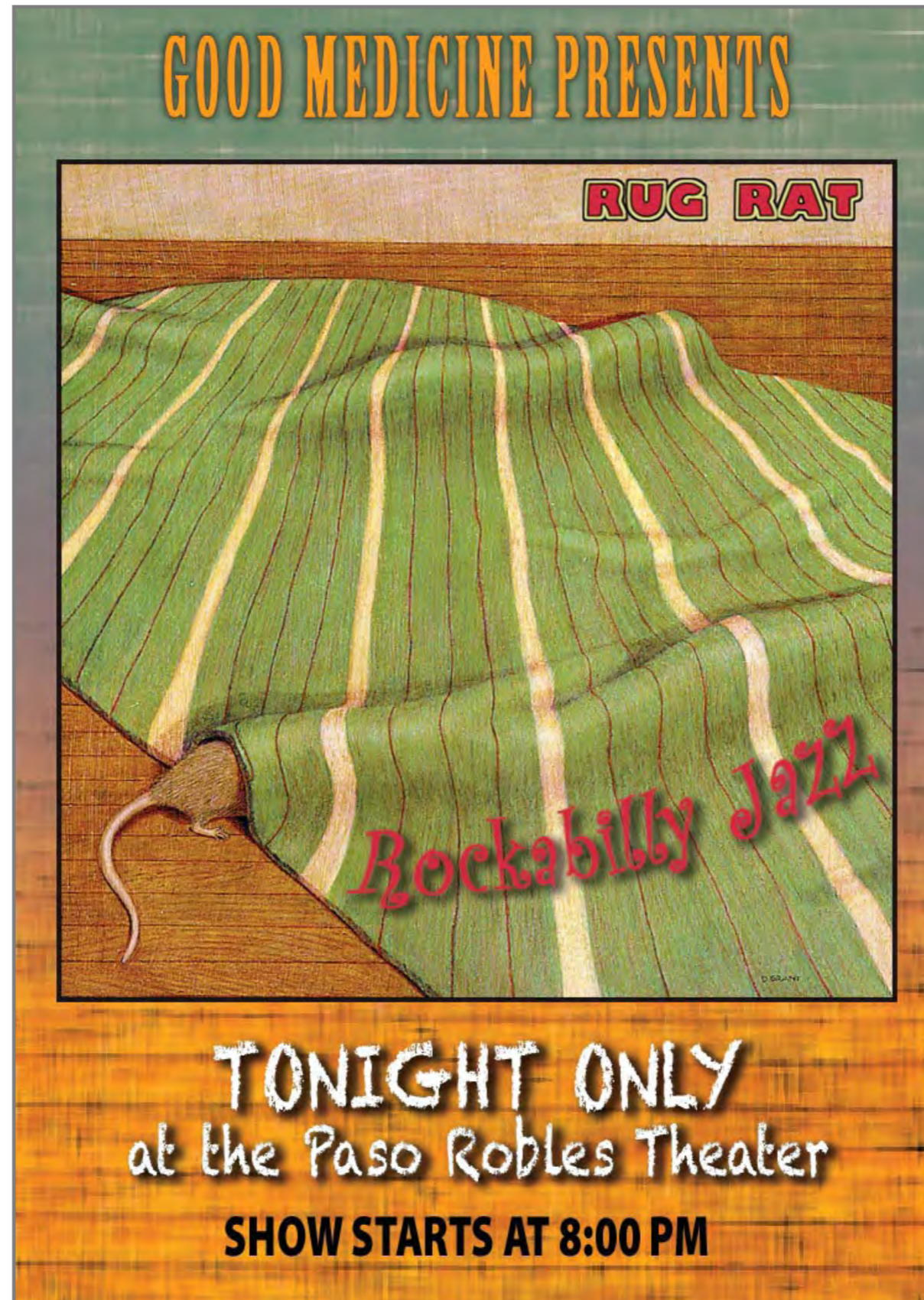
Packaging and logo design to highlight the ease and simplicity of use of the Alfi EZ Cutter.



Original oil painting brings out the local flavor of the county's favorite sun flower oil.



The dynamic design of this illustration catches the eye and draws the viewer into the scene.



Detailed pastel and pencil illustration brings this poster to life. The central image also doubled as a CD jacket cover.





HERE COMES THE SUN, HERE COMES THE SUN AND I SAY IT'S ALL RIGHT LITTLE DARLING, IT'S BEEN A LONG COLD LONELY WINTER LITTLE DARLING, IT FEELS LIKE YEARS SINCE IT'S BEEN HERE HERE COMES THE SUN, HERE COMES THE SUN AND I SAY IT'S ALL RIGHT LITTLE DARLING, THE SMILES RETURNING TO THE FACES LITTLE DARLING, IT SEEMS LIKE YEARS SINCE IT'S BEEN HERE HERE COMES THE SUN, HERE COMES THE SUN AND I SAY IT'S ALL RIGHT SUN, SUN, SUN, HERE IT COMES SUN, SUN, SUN, HERE IT COMES SUN, SUN, SUN, HERE IT COMES SUN, SUN, SUN, HERE IT COMES SUN, SUN, SUN, HERE IT COMES LITTLE DARLING, I FEEL THAT ICE IS SLOWLY MELTING LITTLE DARLING, IT SEEMS LIKE YEARS SINCE IT'S BEEN CLEAR HERE

Daniel I Grant



phone 805.750.0544

e-mail dan@idigdesign.com

web www.dangrant.com

www.idigdesign.com